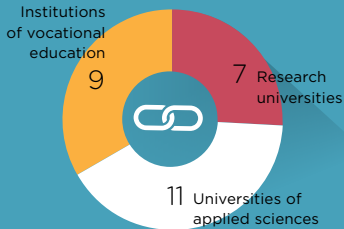


THE DIGITAL LEARNING ENVIRONMENT IN THE NETHERLANDS

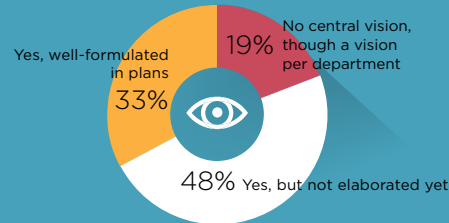
AN OVERVIEW OF THE MOST COMMONLY USED APPLICATIONS IN 2016

SURFnet asked Dutch educational institutions which services and applications they use to support their educational activities. This provided insight into how institutions design their digital learning environment. Institutions were also asked about their future plans.

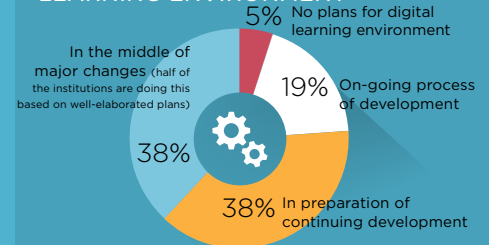
PARTICIPANTS



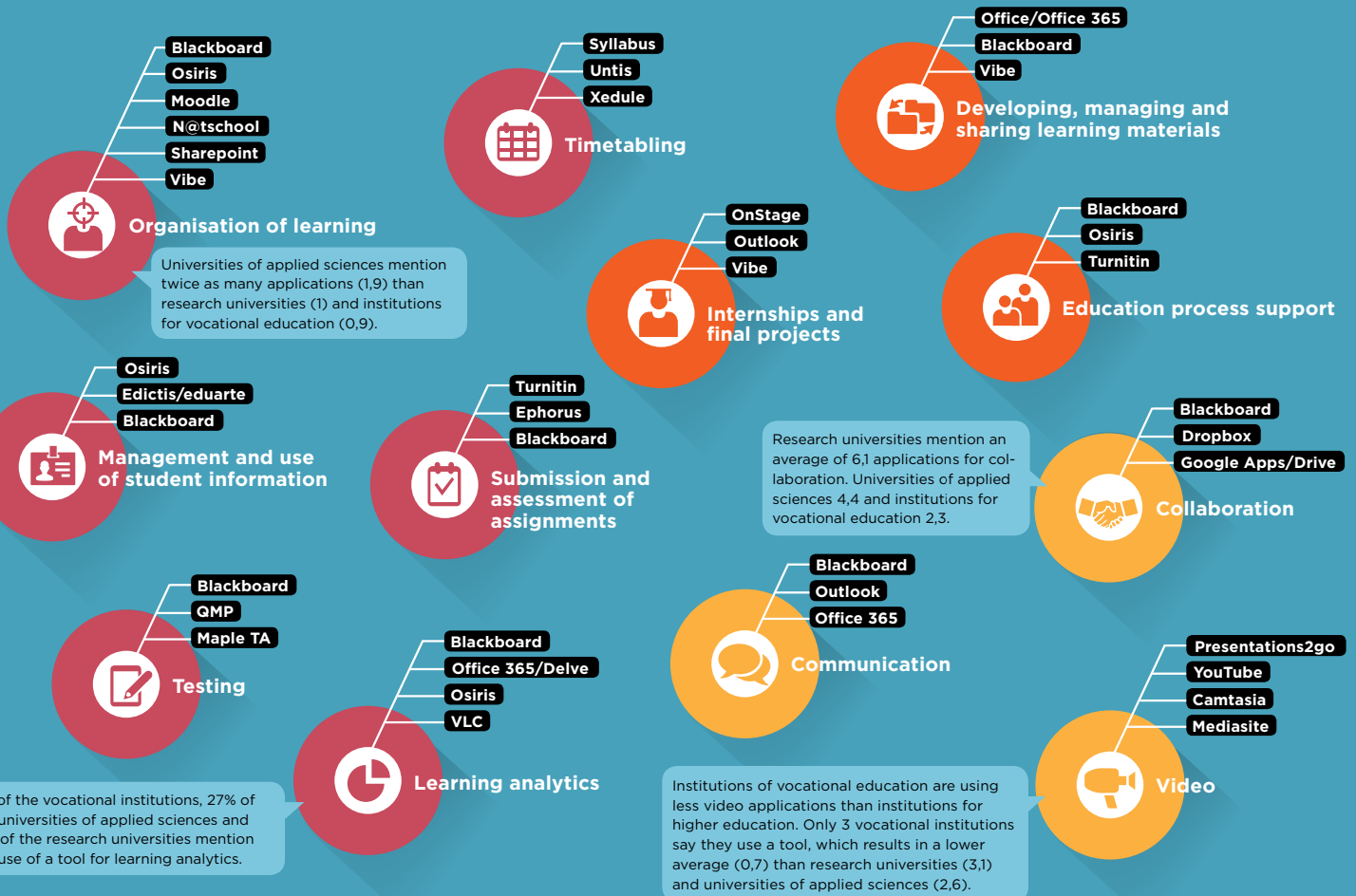
VISION ON THE DIGITAL LEARNING ENVIRONMENT



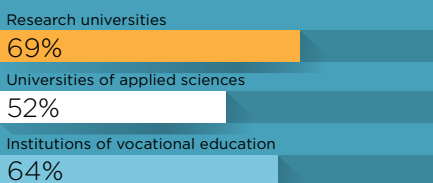
DEVELOPMENT OF DIGITAL LEARNING ENVIRONMENT



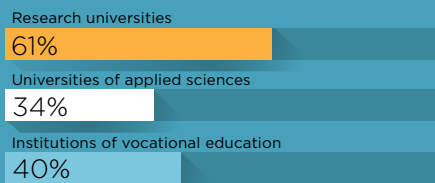
MOST COMMONLY USED APPLICATIONS PER COMPONENT OF THE DIGITAL LEARNING ENVIRONMENT



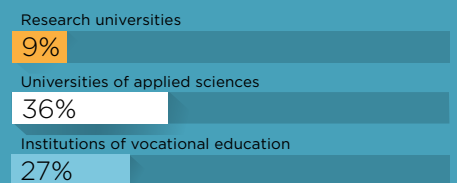
INSTITUTION-WIDE APPLICATIONS



INTERNALLY HOSTED APPLICATIONS



APPLICATIONS LINKED TO SURFCONEXT*



* www.surf.nl/en/surfconext

Please contact onderwijsmaat@surfnet.nl for more information.